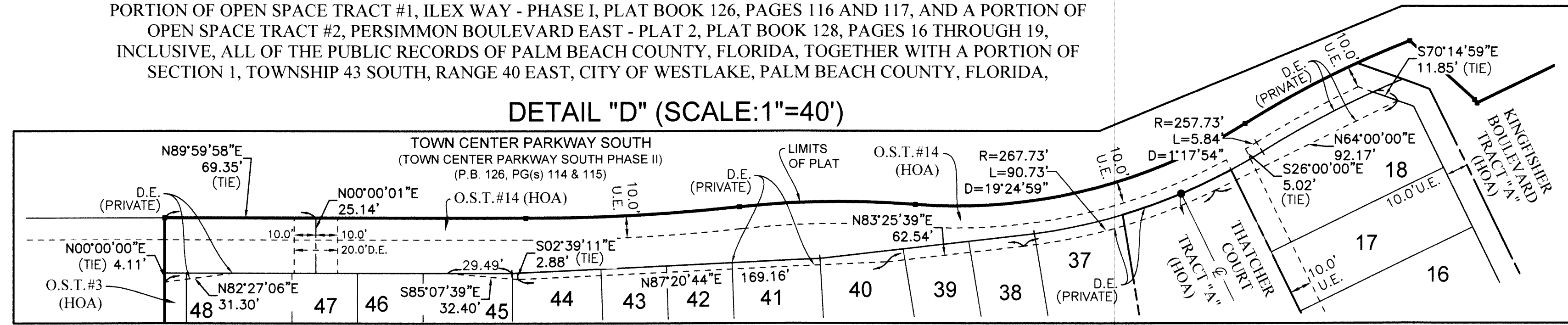


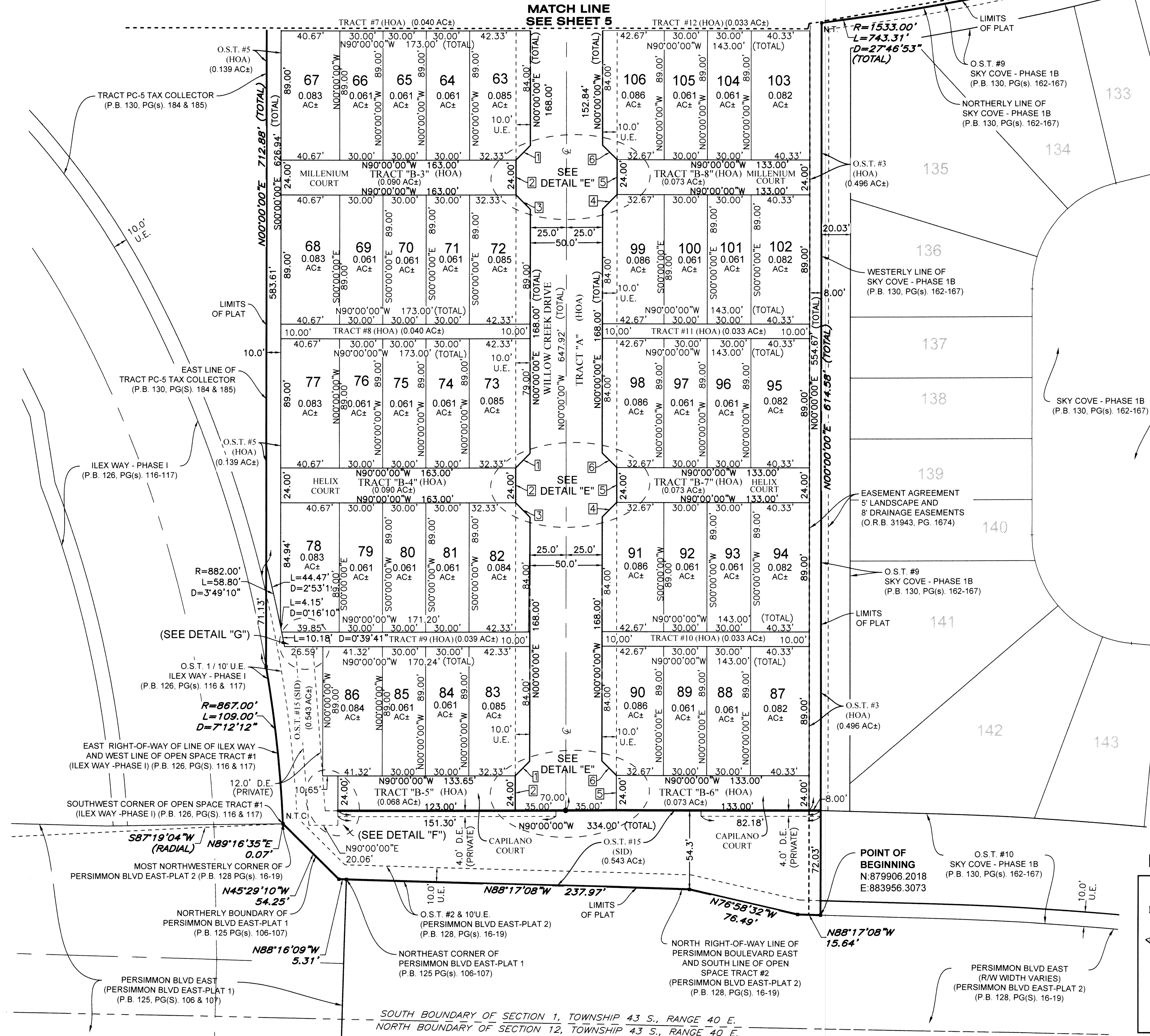
CROSSINGS OF WESTLAKE

BEING A REPLAT OF A PORTION OF OPEN SPACE TRACT #1 AND A PORTION OF OPEN SPACE TRACT #2, TOWN CENTER PARKWAY SOUTH - PHASE II, PLAT BOOK 126, PAGES 114 AND 115, AND A PORTION OF OPEN SPACE TRACT #1, ILEX WAY - PHASE I, PLAT BOOK 126, PAGES 116 AND 117, AND A PORTION OF OPEN SPACE TRACT #2, PERSIMMON BOULEVARD EAST - PLAT 2, PLAT BOOK 128, PAGES 16 THROUGH 19, INCLUSIVE, ALL OF THE PUBLIC RECORDS OF PALM BEACH COUNTY, FLORIDA, TOGETHER WITH A PORTION OF SECTION 1, TOWNSHIP 43 SOUTH, RANGE 40 EAST, CITY OF WESTLAKE, PALM BEACH COUNTY, FLORIDA,

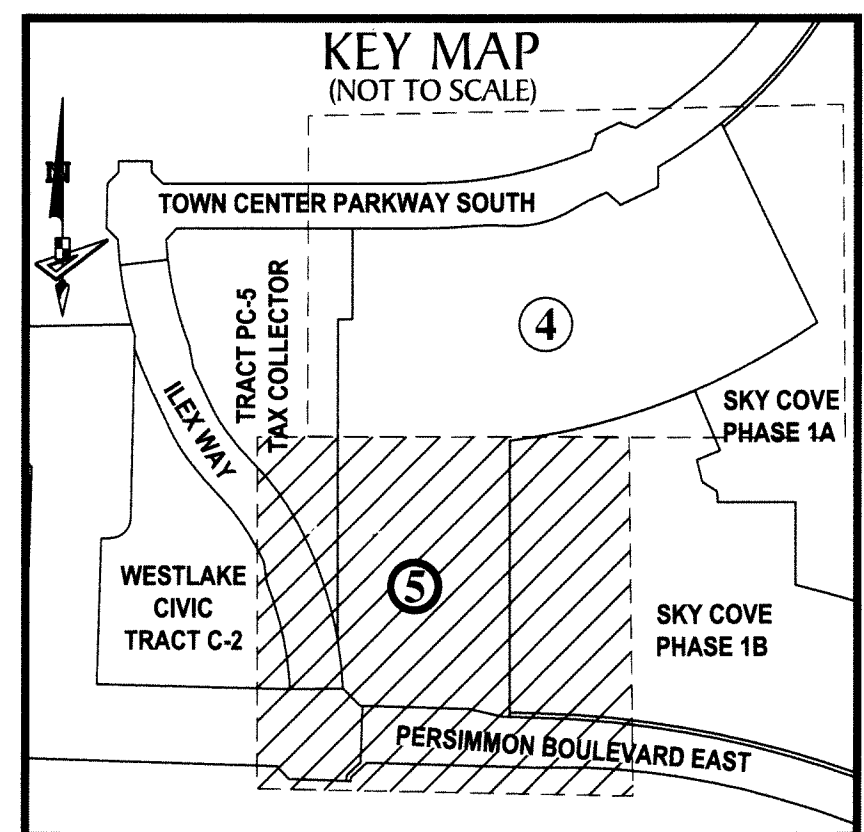
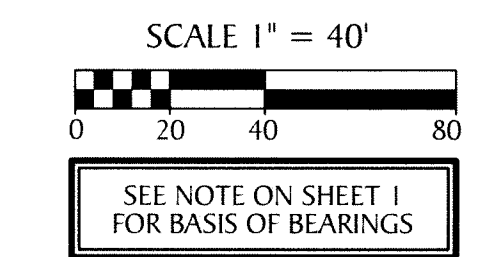
DETAIL "D" (SCALE:1"=40')



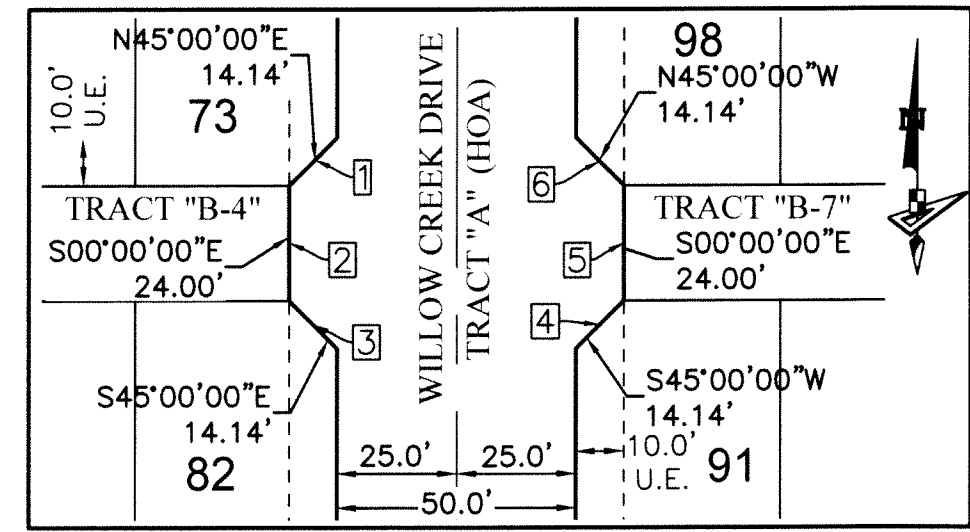
MATCH LINE SEE SHEET 5



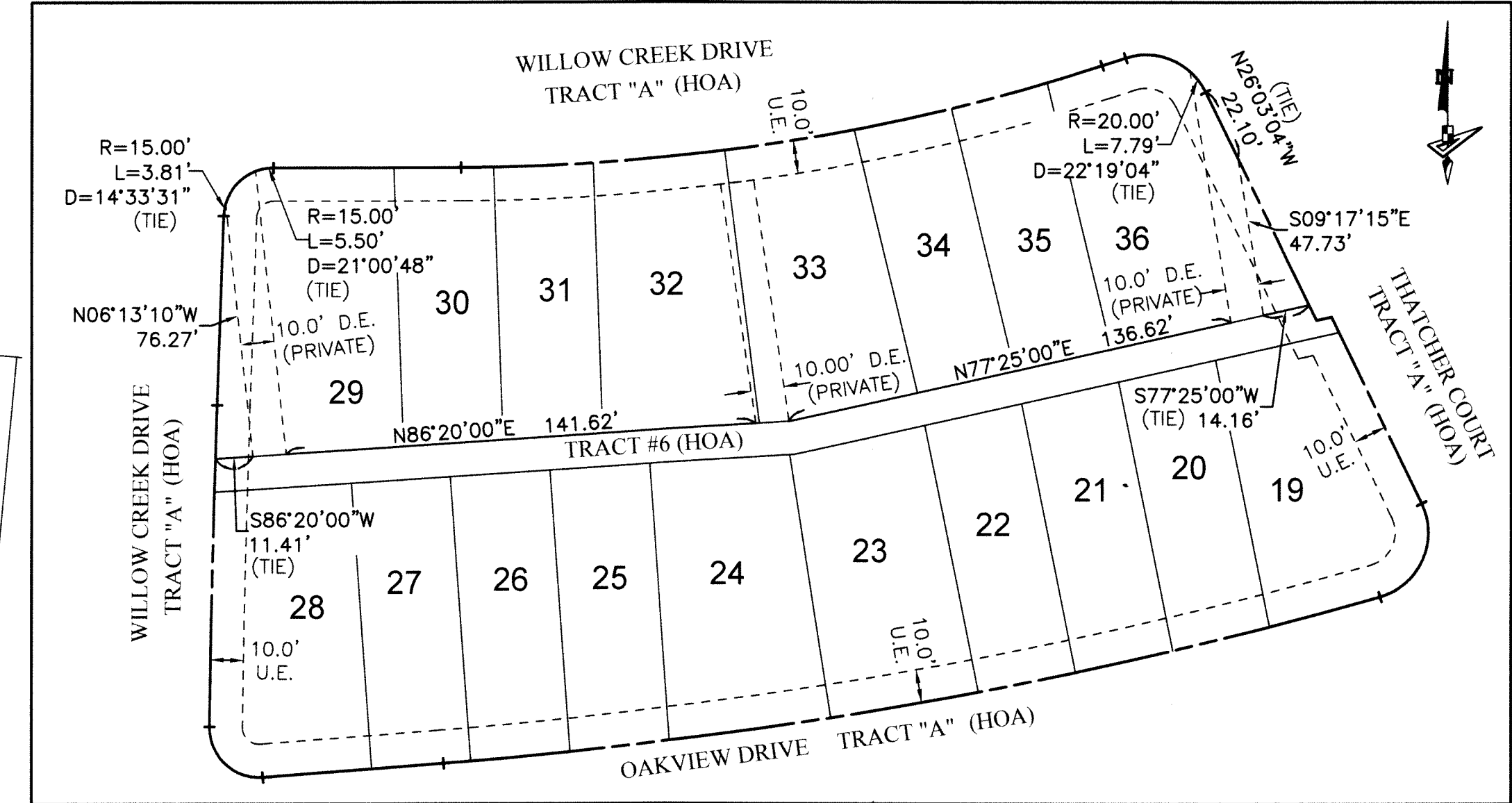
- LEGEND**
- P.O.B. ----- POINT OF BEGINNING
 - P.O.C. ----- POINT OF COMMENCEMENT
 - P.B. ----- PLAT BOOK
 - D.B. ----- DEED BOOK
 - PG./PG(S) ----- PAGE(S)
 - NAD ----- NORTH AMERICAN DATUM
 - O.S.T. ----- OPEN SPACE TRACT
 - P.B.C. ----- PALM BEACH COUNTY
 - U.E. ----- UTILITY EASEMENT
 - D.E. ----- DRAINAGE EASEMENT
 - L.M.A.E. ----- LAKE MAINTENANCE ACCESS EASEMENT
 - 1-43-40 ----- SECTION-TOWNSHIP-RANGE
 - R ----- RADIUS
 - L ----- ARC LENGTH
 - D ----- DELTA ANGLE
 - CB ----- CHORD BEARING
 - C ----- CHORD
 - N.T. ----- NON-TANGENT
 - N.T.C. ----- NON-TANGENT CURVATURE
 - P.C. ----- POINT OF CURVATURE
 - P.T. ----- POINT OF TANGENCY
 - R.C. ----- POINT OF REVERSE CURVATURE
 - SID ----- SEMINOLE IMPROVEMENT DISTRICT
 - R/W ----- RIGHT-OF-WAY
 - CL ----- CENTER LINE OF ROAD
 - (R) ----- RADIAL
 - (NR) ----- NON-RADIAL
 - HOA ----- HOMEOWNERS ASSOCIATION
 - PRM ----- PERMANENT REFERENCE MONUMENT
 - ----- PERMANENT CONTROL POINT
 - ----- FOUND PERMANENT REFERENCE MONUMENT
 - ----- SET 4"x4" CONCRETE MONUMENT WITH 2" ALUMINUM DISK STAMPED "PRM LB 7768"



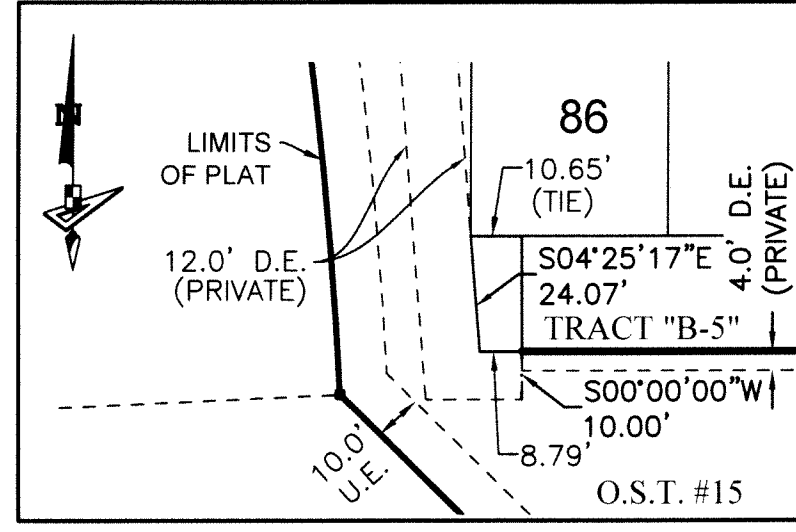
DETAIL "E" (SCALE:1"=40')



DETAIL "C" (SCALE:1"=40')



DETAIL "F" (SCALE:1"=40')



DETAIL "G" (SCALE:1"=40')

